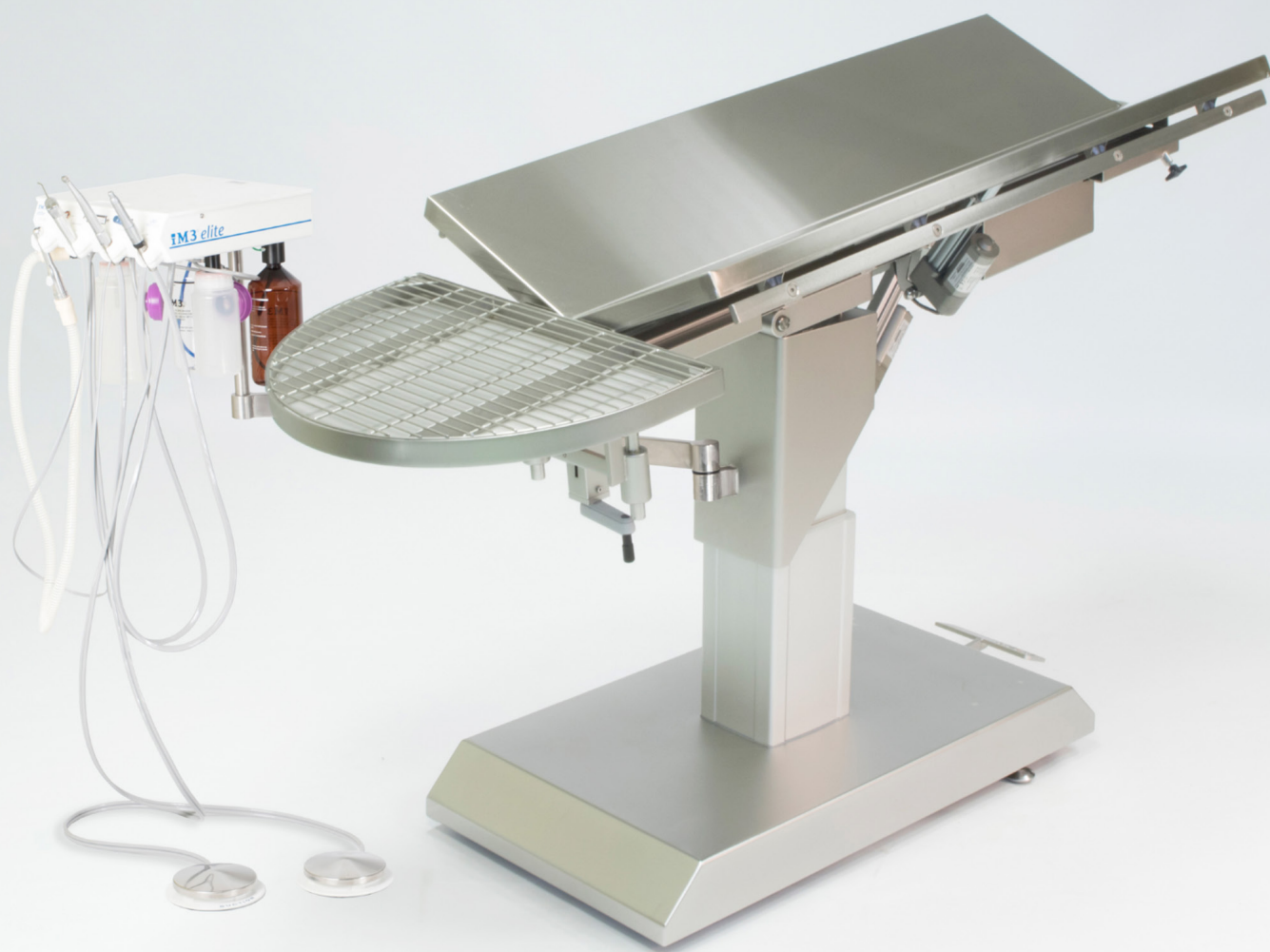


# TARA

by **IM3**<sup>®</sup>



*Design for the real world.*



# After looking and listening for many years we at iM3 believe we have the ultimate in Dental Table design for the real world with TARA by iM3.



## INTEGRATED iM3 CONTROL TOP

Any of our world renowned iM3 dental units can be integrated into the table using our double hinged arm that allows the control top to swing into any position for your convenience. Plus if you have an existing iM3 dental unit it can be easily attached to Tara's arm.

Alternatively Tara is available without the dental unit and makes a perfect companion piece for the iM3 Pro X Dental Stations. Or it can be used standalone with any of our cart solutions.

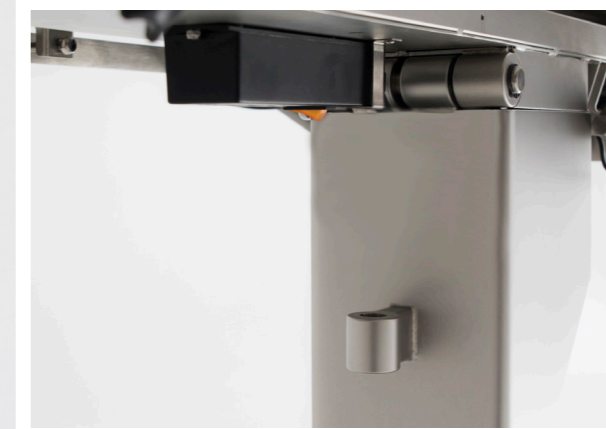
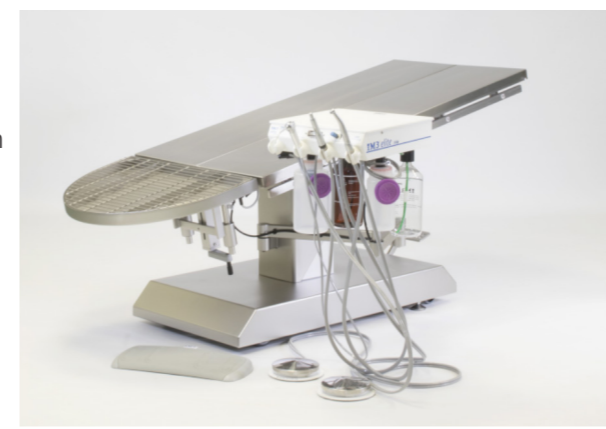


## MOTORISED LIFTING COLUMN

Motorized column for effortless lifting and tilting of the table top. The clean V top and bottom frame design enables easy cleaning and comfortable use. Furthermore there are mains power sockets built into the table for possible accessories such as lights.



The operation of the lifting column and the tilt of the V top table is controlled by a wireless foot remote meaning no additional wires on the ground.



## WORK AROUND YOU

To help keep your working space as organised and as tidy as possible, you can take advantage of the Tara's additional electric supply for up to four devices depending on the configuration of your Tara. So if its lights, monitoring equipment or anything else you will have less wires and cables running across the floor.

Furthermore the Tara has standard mounting rails under the edges of the work surface on both sides. Letting you mount accessories out of the way and save valuable floor and table space.



## ROUND DENTAL TRAY

Our round head dental tray gives greater comfort for the veterinary staff than the traditional 'square' tray. Using a grid that goes all the way to the edge of the tray rather than a mesh or holes to allow for more effective draining of liquids away from the animals head no matter what part of the tray you like to work at.



Our adjustable bracket lets you drop the tray and the head of the animal by 5cm. Also you can raise the tray 5cm above the table to get a consistent level if using blankets or heated pads.



## STABLE AND ERGONOMIC

Tara has been designed to work with you and provide the most ergonomic veterinary dental experience available. From its maximum height of 115cm to it's lowest at 59cm, Tara remains stable at all heights, even with heavy loads.

So whether you like to stand up when you use hand instruments, or if you like to sit down when working with your hand pieces, Tara can be set to your perfect height.



## INSTRUMENT TRAY AND MONITOR ARM

To make it even more convenient you can now also have up to two double hinged arms on your Tara table. You can choose to have a stainless steel instrument tray, made from the same high quality materials as the rest of the table.



Also available is our new Monitor Arm with a standard VESA connection allowing you to attach any type of screen or multi parameter equipment. (screen not included)



## DRAINING AND CLEANING

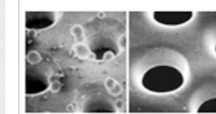
Based on the feedback from dental specialists, it is better to have a tray that can be removed and drained rather than draining into a bucket. With Tara there is less to clean and no annoying hoses or buckets where you want to put your knees. Thanks to our ingenious wave breakers it is easy to carry the tray with no spills.

Removing the tray for draining and cleaning could not be easier. The tray detaches and reattaches with ease and yet remains amazingly stable when attached.



## STAINLESS STEEL WITH WARMING

We use only the highest quality materials in Tara, the main V-top is made from Stainless Steel with optional warming. We use infra red to heat our warming plates which transfers heat evenly across the surface of the table with no hot spots. The dental tray itself is electro polished stainless steel.



Untreated Electropolished

Electro polishing results in smooth polished surfaces which are almost inert, increasing resistance to oxidation, ensuring longer life and a higher resistance to antibacterial products.



## PRACTICAL AND MOBILE

Everything about the Tara table is designed for the real world. When in place the brake is applied and the heavy duty wheels are retracted into the base, giving the robust stability of the table even at full height.

The brake can then be simply released by foot, the wheels drop down and the table becomes mobile once again, allowing ease of access when cleaning.



## V TOP TABLE

The Stainless Steel V Top table is driven by 4 low voltage motors and is designed to be as a silent as possible. Besides allowing the table to be used as a surgery table, using a V top table for dentistry makes it easier to turn the animal over and gives better positioning and comfort for the animal.



Each plate on the V top has its own individual motors allowing them to move completely independently of each other, so whatever your needs Tara can adapt effortlessly.



## REAL WORLD DESIGN

Tara is ready for every patient and every eventuality, the table top dimensions are 160 x 60 cm with an optional 30cm extension available, either for larger animals, or as a convenient place for monitoring equipment or surgical instruments.

For any liquids that might leak on to the V top there is a convenient pull out drain giving you peace of mind.

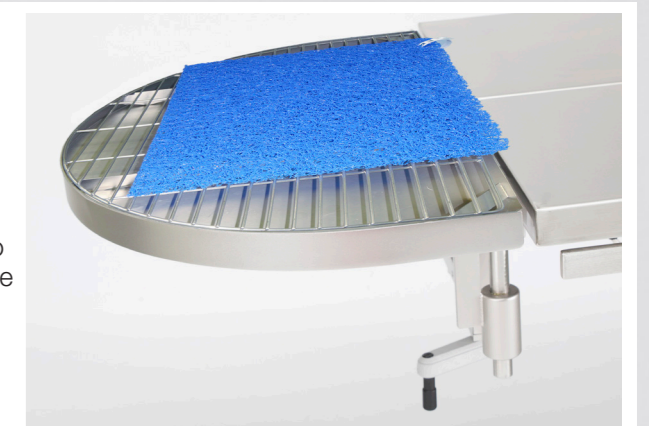


## iM3 DENTAL MAT

Deliberately designed to fit, the popular Dental Mats from iM3 are the perfect size and shape to fit on Tara's Dental Tray. The mat fills the maximum area of the tray while still leaving the sides clear for veterinary staff to discard debris and extracted materials into the tray.



The iM3 Dental Mat provides comfort to patients and veterinary staff and at same time allows liquids to drain away from the patients head. The Dental Mats are machine washable upto 60°C and are made from recyclable plastic.





*“Tara from iM3 is a stable, durable, high end dental table, with a lot of innovative solutions. For the veterinary dentist, the Tara table will be a best friend for life.”*

- Jens Ruhnau, TandDyreklinikken  
DVM, Specialdyrlaage, Dipl.EVDC,  
EBVS European Veterinary Specialist in Dentistry

**Design for the real world.  
Choose the setup that fits your  
Dental Lifestyle.**

### OPTIONS

TB0001 – iM3 Tara Table

TB0002 – Dental Tray and bracket

TB0004 – Table Mounted Arm for Dental Unit

TB0005 – Table Extension

TB0006 – Warming

TB0007 – Additional Dental Tray

TB0008 – Instrument Tray on arm

TB0009 – Monitor Arm with VESA Connection

U3301T – iM3 GS Deluxe Dental Unit Control Top

U3302T – iM3 GS Deluxe LED Dental Unit Control Top

U3400T – iM3 Elite Dental Unit Control Top

U3069T – iM3 Pro 2000 Dental Unit Control Top

I62000 – iM3 Silent Hurricane Compressor

Quotes available on request



Martin Hedin, Ulvsby Smådjursklinik, Sweden



A-vet Smådyrklipp, Norway

### TECHNICAL DATA

Length (V-top only) – 120 cm

Length (V-top + dental tray) – 160 cm

Width (V-top) – 60 cm

Table extension (optional) – 30 cm

Total weight – 95 kg

Safe load – 160 kg

Height adjustment – 59 - 115 cm

Tilting 0-10 degrees.

Motors – 4 pcs, 24V; IP 54



Sten Kokholm, Slagelse Dyrehospital A/S, Denmark



See **TARA** in action on our YouTube channel  
Search iM3 Direct or scan the code with your  
smart phone!

**Lia**  
by **iM3**<sup>®</sup>



Height adjustable,  
stainless steel cart  
that makes any table  
a dental table!

*The Dental Table for Everyone*

**iM3**<sup>®</sup>  
THE VETERINARY DENTAL COMPANY

iM3 Dental Limited

Unit 9 Block 4, City North Business Park, Co Meath, Ireland, K32 V634

Main Office +353 (0) 1 6911277 | UK Direct Number +44 (0) 1423 224297

e sales@im3dental.com | [www.im3vet.eu](http://www.im3vet.eu)